



Emily Tully

BA Honours, QTS, Sol PG Cert, Vocal Habilitation
Professional

Contact

www.emilytully.co.uk

emilytully@hotmail.co.uk

Birmingham

Driving license - own car

Education

**1ST CLASS BA MUSICAL THEATRE
2010 | ESSEX UNIVERSITY**

**INITIAL TEACHER TRAINING |
1A- QTS 2014 | WOLVERHAMPTON
UNIVERSITY**

**SPECIAL NEEDS MUSIC POST
GRADUATE CERTIFICATE |
QUALIFIED | ROEHAMPTON
UNIVERSITY**

**VOCAL HABILITATION
PROFESSIONAL | LEVEL 5 |
DISTINCTION**

**A LEVEL | 2007 | ASHFIELD
SCHOOL**

*PERFORMANCE STUDIES- A | ENGLISH-
C | PSYCHOLOGY- C*

GCSE | 2005 | ASHFIELD SCHOOL
ENGLISH AB | SCIENCE BB | MATHS
B | OTHER ABCC

Skills

Ability to work independently using initiative and creativity.

Ability to manage and work well with others and work towards shared aims.

Excellent at working under pressure with the ability to multitask and prioritise.

Committed to hard work and determined to achieve high results quickly and efficiently.

Personal Statement

I am a music and performing arts teacher for pupils with SEND; passionate at providing musical opportunities. I am enthusiastic especially in response to my pupil's enjoyment and commitment to learning. A major challenge is to think creatively which develops my practice and more importantly adds value to pupil learning. Music is valuable for lifelong learning and communication and I promote participation in lessons, performances and concerts.

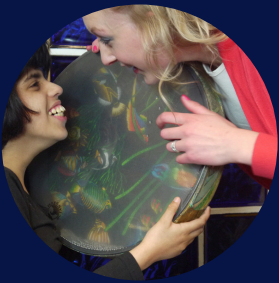
Experience

HEAD OF PERFORMING ARTS 🎵 CALTHORPE ACADEMY 🎵 2019-AUGUST 2023

MUSIC SPECIALIST 🎵 CALTHORPE ACADEMY 🎵 2012-2019

Managing a performing arts department and teaching pupils with learning and behaviour needs and disabilities; ASD, SLD and PMLD aged 2-19.

- Responsible for running a vibrant and successful music and performing arts department in a school of 400 pupils, 300 staff.
- Developing music and arts activities that consider the different ways pupils access these subjects based on their needs and level of communication. Pupils are given opportunities to demonstrate their expressive communication and creativity; turn taking, generating silences, waiting and pausing, simple patterns, beats, rhythms, interactive, proactive and reactive opportunities, etc.
- Devising and organising music and drama performances in and out of school, including whole school productions.
- Responsible for performance managing and overseeing performing arts staff in the department and across the school.
- Leading multiple excursions to major music and performing arts venues across departments, Key Stages and year groups; up to 10 classes attending four performances over two days.
- Scheduling peripatetic instrument lessons for gifted pupils.
- Orchestrating workshops to provide wide musical experiences.
- Networking with local music organisations and charities like CBSO, Birmingham Music Service, Live Music Now, THSH; to provide performances, workshops and musical opportunities.
- SEND music lecturer at Birmingham Conservatoire and Roehampton University; training students to support performances and workshops in school.
- Sounds of Intent practitioner; implemented throughout school.
- Plan and implement performing arts curriculums suitable for different three strands of learners with different needs, across five key stages and four subject areas.
- Liaising with heads of departments to ensure planning and activities are cohesive with departmental curriculums.
- Leading staff training on how to support pupil's music making.
- Provide parental workshops to promote music making at home.
- Report writing, data input, planning, evidence gathering, behaviour management, and interventions.
- Facilitated a two year CPD program that explored speech and language strategies and how I can integrate them with singing activities to improve pupil's verbal communication.



Emily Tully

BA Honours, QTS, Sol PG Cert, Vocal Health First Aid

Training

Makaton signing levels 1-4
Team Teach
Positive Behaviour Management
Asthma
Epilepsy
Medication Administration
Food Handling
Vocal Health First Aid
Baby First Aid
Level 2 Safeguarding

Interests & Hobbies

- Old Joint Stock Musical Theatre Company; I played a lead role in I Love You, You're Perfect, Now Change.
- I endeavour to lead an active lifestyle; I dance, cycle, swim and jog as often as possible.
- I love to bake and decorate.
- I sing wherever I'm invited to.
- Amateur pianist and I dabble in various instruments.
- Mum of one and family time is of great importance to me.

SINGING/SEN MUSIC TEACHER 🎵 EMILY TULLY'S MUSIC 🎵 2017-PRESENT

Running my own business in order to open up musical opportunities to singers and pupils with SEND and their families.

- My funding applications and marketing strategies raise awareness of extracurricular music lessons for those with SEND. I create community integration through performances and music lessons accessed by "Mainstream" pupils and pupils with SEND.
- Teaching safe and effective singing and performance technique to a variety of singers; acting through song, voice qualities, breathing, posture, anatomy, performance, etc.
- Currently studying to be a Vocal Health Practitioner.
- Designed and converted my garage into a music studio suitable for the varying needs and abilities of my students.
- Working with families, carers and parents on communication strategies and techniques through music.
- Created baby music classes and songs based on pre-verbal communication skills and developing parental understanding of how to communicate with our babies; trialled and tested during maternity leave.

AMBERPLUS & SOUNDBOUT MUSIC PRACTITIONER 🎵 2018-PRESENT

Facilitating music sessions for children and adults with various learning difficulties and disabilities.

- Creating music sessions to provide communication opportunities among families and making music an integral part of family life.
- Running the Birmingham Soundabout Inclusive Choir

SINGER AND PERFORMER 🎵 FREELANCE 🎵 2010-PRESENT

As a professional singer I sing, direct and produce performances, taking responsibility for management, business strategies, bookings, accountancy, marketing, social networking, contracts, and lighting and sound

- Performing at various events; weddings, celebrity birthdays, Strictly Come Dancing Balls, Christmas lights switch ons, public holiday celebrations, hotels, soloist for bands and orchestras, nursing homes, Christmas parties, public events.

Related Experience

SINGING TEACHER 🎵 PROGRESS MUSIC ACADEMY 🎵 2012-2020

Teaching singing to pupils with various musical backgrounds and experiences. Trinity Rock and Pop exams; 100% pass success rate.

- Teaching singing and performance technique to suit the experience and abilities of pupils. Giving examples of good practice and working with a range of musical genres. Facilitated and organised performances for the whole music school by grouping soloists into bands of similar ages and experience.

MUSICAL THEATRE TEACHER 🎵 PQA 🎵 2012-2013

Teaching musical theatre techniques to young people of five to eighteen years old.

- Setting suitable goals adapted for different ages and abilities results in the learners successfully achieving targets.